

A collage of various tropical fruits. In the top right, a branch with green leaves and a single, large, oval-shaped fruit hangs down. In the top left, a small branch with a single leaf and a small, teardrop-shaped fruit is visible. The center of the image features a large, green, bumpy fruit. Below it, there is a large, round, reddish-brown fruit. To the left of the green fruit is a yellow, bumpy fruit. In the bottom left, a large, round, orange fruit is cut in half, showing a dark brown seed. To the right of the orange fruit is a pink dragon fruit with green leaves. In the bottom right, a small, round, purple fruit is cut in half, showing a white interior with seeds.

TROPICAL FRUIT TREES

KAUAI NURSERY & LANDSCAPING, INC.

CONTENTS

SPICE TREES

ALLSPICE.....	5	CLOVE.....	6
BAY LEAF.....	5	CURRY LEAF.....	7
CINNAMON.....	6	KAFFIR LIME.....	7

FRUIT TREES

ABIU.....	9	LOQUAT.....	33
ACEROLA.....	9	MACADAMIA NUT.....	33
AKEE.....	10	ALABAR CHESTNUT.....	34
ATEMOYA.....	10	MAMMEY APPLE.....	34
AVOCADO.....	11	MAMMY SAPOTE.....	35
BANANA.....	13	MANGO.....	36
BILIMBI.....	14	MANGOSTEEN.....	40
BLACKBERRY JAM FRUIT.....	15	MIRACLE BERRY.....	40
BLACK SAPOTE.....	15	MOUNTAIN APPLE.....	41
BLACK MULBERRY.....	16	PAPAYA.....	42
BLUE GRAPE TREE.....	16	PASSIONFRUIT.....	43
BREADFRUIT.....	17	PEANUT BUTTER FRUIT.....	43
CACAO.....	18	POMEGRANATE.....	44
CASHEW.....	18	RAMBUTAN.....	44
CITRUS.....	19	ROLLINIA	45
COFFEE.....	26	SAPODILLA.....	45
DRAGON FRUIT.....	27	SANTOL.....	46
EGG FRUIT.....	28	STAR APPLE.....	46
FIG.....	28	STARFRUIT.....	47
GUAVA.....	29	SOURSOP.....	47
GRUMICHAMA.....	30	SUGAR APPLE.....	48
ICECREAM BEAN.....	30	SURINAM CHERRY.....	48
JABOTICABA.....	31	TAMARIND (SWEET/SOUR).....	49
JACKFRUIT.....	31	WAMPI.....	49
LONGAN.....	32	WHITE SAPOTE.....	50
LYCHEE.....	32		

SPICE TREES

ALLSPICE

Pimenta dioica

TREE SIZE A slow growing tree that may reach 30 feet in height and 10-15 feet spread.

ECOLOGY Prefers full sun and is drought tolerant.

PRODUCTION SEASON Allspice will bear in 5-6 years. The berries are harvested while still green, dried and then ground into spice. The berries ripen in the fall.

DESCRIPTION Very beautiful tree that will do well in containers. The large glossy leaves are also aromatic.



BAY LEAF/BAY LAUREL

Laurus nobilis

TREE SIZE A large shrub or small tree

ECOLOGY Laurel prefers well drained soils and full sun

PRODUCTION SEASON The mature leaves may be harvested at any time.

DESCRIPTION An evergreen ornamental plant with shiny, dark green leaves. The dried leaves are widely used in Mediterranean cuisines.



© Forest & Kim Starr

CINNAMON

Cinnamomum verum

TREE SIZE The bushy cinnamon tree reaches 20 -40 feet in height and has a spread of 10-20 feet.

ECOLOGY Grows well in all areas if watered and protected from strong winds. Cinnamon will tolerate light shade.

PRODUCTION SEASON The inner bark of young branches is peeled off and dried to produce cinnamon, the spice.

DESCRIPTION Very beautiful ornamental with attractive foliage that flushes red to pink. The trunk is golden brown, the young branches are light green.



CLOVE

Syzygium aromaticum

TREE SIZE Small to medium sized tree 15-30 feet tall and half as wide.

ECOLOGY Requires a warm, humid, microclimate with adequate wind protection

PRODUCTION SEASON Cloves will flower from the 5th year on. The flower buds are harvested in the Fall.

DESCRIPTION Exceptionally handsome small tree, which is generally multi-trunked. It has beautiful shiny leaves and prolific dark fruits. The unopened flower buds are harvested and dried to produce the spice.



CURRY LEAF

Murraya koenigii

TREE SIZE A small, bushy tree up to 20 feet in height.

ECOLOGY Tropical to sub-tropical will tolerate dry condition and poor soils.

PRODUCTION SEASON The leaves may be harvested year around.

DESCRIPTION The pungent leaves are used fresh or dried in Indian cuisine.



KAFFIR LIME

Citrus hystrix

TREE SIZE A small, bushy tree (available on standard, semi-dwarf and true dwarf rootstock).

ECOLOGY Will grow well in wet as well as dry areas (with irrigation).

PRODUCTION SEASON Leaves may be harvested year around.

DESCRIPTION Grown for it's strongly flavored leaves which are widely used in S.E. Asian cuisine. It has many fine branches and lumpy, inedible fruit.



©Robyn Jay

FRUIT TREES

ABIU

Pouteria caimito

TREE SIZE Height 15-20 feet, spread 10-15 feet.
May be contained by proper pruning practices.

ECOLOGY Does best in humid, protected, microclimates.

PRODUCTION SEASON Seedlings bear in 2-3 years.
Ready for harvest August through December.

DESCRIPTION Baseball sized fruits are eaten when fully ripe. They have a bland, sweet taste.

VARIETIES *Gray*



ACEROLA, BARBADOS CHERRY

Malpighia puniceifolia

TREE SIZE Up to 20 feet tall and 20 feet spread.
May be contained by proper pruning practices.

ECOLOGY Adapted to all areas, drought and wind tolerant.

PRODUCTION SEASON Begins to bear in 2-3 years.
Several crops between May and December.

DESCRIPTION Cherry sized red fruits are somewhat sour. They have the highest vitamin C content of any fruit.

VARIETIES *Manoa Sweet* – improved selection.



AKEE

Blighia sapida

TREE SIZE A very ornamental spreading tree that reaches 30-40 feet in height.

ECOLOGY A tropical to subtropical that does well from sea level to 3,000 feet altitude. The tree was brought to the west Indies from tropical Africa in the 18th century.

PRODUCTION SEASON Will bear 2 or more crops a year.

DESCRIPTION The unripe fruits and seeds are highly toxic. The fruit capsule must be fully open (photo) before the fruit is harvested. The arils are par-boiled in salt water or milk, then lightly fried in butter. The national dish in Jamaica.



ATEMOYA

Annona squamosa x cherimoya

TREE SIZE Height 25-30 feet, spread about the same.

ECOLOGY Grows best in warm, wet areas with good drainage.

PRODUCTION SEASON Grafted trees will produce in 3-4 years. Fruit ripens September to November. Hand pollination will increase yields and fruit size.

DESCRIPTION Known to be one of the tastiest tropical fruits. May be spooned from the half-shell or used in smoothies. Seeds are toxic.

VARIETIES *Geffner* - most common in Hawaii.



AVOCADO

Persea Americana

TREE SIZE Height 20-60 feet, spread 25-35 feet. May be contained by proper pruning practices, but yield may decrease.

ECOLOGY Suitable for all areas, but irrigation will be required in dry areas and good drainage in wet areas. Planting on slopes in wet areas is desired. Low salt tolerance.

PRODUCTION SEASON Grafted trees begin to bear 2-3 years. Different varieties will produce at different times throughout the year.

DESCRIPTION Dark skinned varieties will turn from green to purple black when ripe and green varieties will take on a matt yellow tinge when ready to harvest.

CULTIVARS We have the following cultivars that are well adapted to Hawaiian conditions.



Holiday

FRUIT: Large, pear shaped

PRODUCTION SEASON: Fall

TREE SIZE: Small

Dwarf cultivar bearing fruit of excellent quality. Like the "Littlecado", it makes a good container tree.



Little Cado AKA Wurtz

FRUIT: Small, Hass-like, green, pebble skin

PRODUCTION SEASON: Winter to spring

TREE SIZE: Small

This tree is adapted to containers. Suitable for small yards.



Case

FRUIT:

PRODUCTION SEASON: Summer to fall

TREE SIZE: Small to medium-spreading

It's very attractive tree but an alternate bearer.



Green Gold

FRUIT:

PRODUCTION SEASON: Winter to spring

TREE SIZE: Small

Selection of Sharwil with heavier and more regular production.



Kahaluu

FRUIT: Large oval fruit with tiny seed, green skin

PRODUCTION SEASON: August to October

TREE SIZE: Small, Spreading
Alternate bearer. The best-flavored Hawaiian variety.



Murashige

FRUIT: Medium to large, green skin

PRODUCTION SEASON: Spring to summer

TREE SIZE: Medium

Bears heavily in alternate years. Excellent flavor.



Nishikawa

FRUIT: Large, green skin

PRODUCTION SEASON: Winter to spring

TREE SIZE: Medium

Excellent flavor, good producer on med size tree.



Hass

FRUIT: Small, purple to black skin

PRODUCTION SEASON: February to October

TREE SIZE: Medium

It does not produce as well as "local" varieties in Hawaii. Rich flavor with high oil content.



Sharwill

FRUIT: Small to medium, green skin

PRODUCTION SEASON: Winter to spring

TREE SIZE: Medium

Excellent flavor. Bears heavily in alternate years.

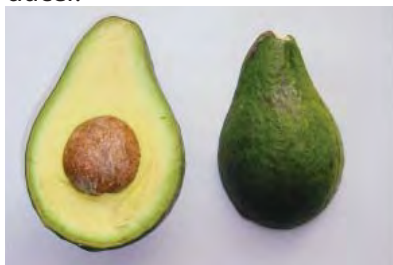


Yamagata

FRUIT: Medium to large, green skin

PRODUCTION SEASON: Spring to summer

TREE SIZE: Medium to large
Excellent quality. Consistent producer.



Malama

FRUIT: Large, black to purple skin
PRODUCTION SEASON: Summer to fall

TREE SIZE: Medium to large
Excellent quality. Regular bearer.



BANANA

Musa sp.

PLANT SIZE Our cultivars range from 6 to 15 feet in height.

ECOLOGY Bananas need full sun and fertile soil with good drainage. Wind protection, irrigation and regular fertilization will assure high yields.

PRODUCTION SEASON Established plants ("mats") will produce bunches every 6-8 months under favorable conditions.

DESCRIPTION Bananas are large, attractive herbaceous plants that will quickly and regularly produce tasty and nutritious fruit.



VARIETIES

Dwarf Apple

6-8 feet high

This is the most popular cultivar in Hawaii. It's very hardy and believed to be more resistant to bunchy top virus than other cultivars. It produces medium sized bunches of short, plump, very sweet fruit.

Dwarf Red (a mutation of the large Cuban Red)

7-8 feet high

The Dwarf Red produces high quality red fruit either for eating raw or cooking. It's also a strikingly beautiful ornamental that is suitable for small yards.

Ice Cream

10-15 feet high

The Ice Cream banana's immature fruit are a beautiful silvery blue, turning pale yellow when mature. Best eaten raw the ripe flesh is fluffy and sweet.

Pisang Awak (Indonesia) aka Dwarf Namwah (Thailand)

9-10 feet high

This is a Lady Finger type cultivar that produces large bunches of smallish, delicious fruit that are highly prized throughout Asia. It's drought, wind and disease resistant.

Raja Puri

6-8 feet high

Of Indian origin, it's fruit is similar to the Dwarf Apple. It is considered to be easy to grow and the wide leaves make it an attractive ornamental landscaping plant.

"Common" Plantain aka Platano

12-18 feet high

Of African origin these large cooking bananas are widely cultivated in tropical America. The curved 8-14 inch fruits grow in 5-9 hand bunches.

BILIMBI, KAMAIS, PIYAS

Averrhoa bilimbi

TREE SIZE Up to 20 feet high, spread 15 feet

ECOLOGY All areas with irrigation and good drainage

PRODUCTION SEASON Begins to produce in 2-3 years, bears May and December

DESCRIPTION Attractive foliage, red flowers on trunk, and larger branches. The fruits are tart and used in cooking and to make refreshing drinks.



BLACKBERRY JAM FRUIT

Randia Formosa

TREE SIZE A small bushy shrub 4-5 feet high that also makes an excellent container plant.

ECOLOGY It does best in acidic, well drained soil and is shade tolerant.

PRODUCTION SEASON Winter/spring

DESCRIPTION The shrub has dense, attractive foliage and is covered with fragrant gardenia-like flowers. It's small yellow fruit capsules contain a very sweet black pulp.



BLACK SAPOTE

Diospyros digyna

TREE SIZE Black sapote is a large tree up to 80 feet in height but can be pruned smaller.

ECOLOGY Will do well in all areas and soils.

PRODUCTION SEASON Seedlings will enter production in 4-5 years. Fruiting is mainly in the fall/winter. Fruit should be picked and eaten when fully ripe.

DESCRIPTION Bears large green skinned fruit. The flesh of ripe fruit have the color taste and texture of chocolate pudding.



BLACK MULBERRY

Morus nigra

TREE SIZE Can become quite large, but is easily maintained as a lush, bushy shrub enabling increased production and ease of harvesting

ECOLOGY Does well in all areas

PRODUCTION SEASON Grows rapidly and will produce in the second year, bears several crops a year when pruned regularly.

DESCRIPTION The giant mulberry has very attractive glossy green leaves, and bears 1 inch long berries that are black when ripe. The berries are very sweet and may be eaten fresh or made into preserves.



BLUE GRAPE TREE

Myrciara vextor

TREE SIZE A slow growing, bushy tree that will reach 6-8 feet in height.

ECOLOGY It will grow well in all areas with irrigation and prefers deep, rich soils.

PRODUCTION SEASON From 6-8 years of age the Blue Grape will bear heavily in spring and fall.

DESCRIPTION It is a attractive, rare Jaboticaba relative bearing large dark purple, grape/berry flavored fruit.



BREADFRUIT, ULU

Artocarpus altilis

TREE SIZE Reaches 30-40 feet in height with a 20-30 foot spread.

ECOLOGY Grows best in wet areas.

PRODUCTION SEASON Produces in 4-5 years.

DESCRIPTION The large leafed breadfruit is a beautiful specimen tree.
The starchy fruits are baked, boiled, steamed, or fried.



VARIETIES

Ma'afala

A Samoan variety that bears from July to December with some off-season fruiting in January to May. It's a small, compact tree that can be kept to under 20'. The mostly seedless fruit average 2 lb. and have a firm texture when cooked. Ma'afala has the highest known protein content (7%) of any breadfruit variety.

Otea

French Polynesian origin, produces from July to February with some fruiting as early as May. The large seedless fruits weigh about 4lb. with pale-yellow firm, tender flesh. Otea is delicious roasted, baked, boiled or steamed. It's very prolific and is recommended for commercial production of value added products.

Piipiia

Also from French Polynesia it fruits twice a year from August to December and February to May. The fruits average 3lb. and are seedless. They have a soft creamy texture and excellent flavor when baked or roasted.

Ulu Fiti

From Samoa has a main fruiting season from August to December with some fruiting in July and January.

Note that- by growing these 4 varieties one can enjoy some breadfruit almost all year around!

CACAO, CHOCOLATE TREE

Theobroma cacao

TREE SIZE A small bushy tree up to 15 feet tall and 10 feet wide.

ECOLOGY Prefers high humidity and good wind protection. Young trees do best in partial shade.

PRODUCTION SEASON Trees will begin to produce in 3-4 years. Cacao will bear irregularly throughout the year.

DESCRIPTION The football shaped fruit pods are borne on the trunk and main branches. They turn from grey to red or yellow when ripe. The seeds which are fermented to make chocolate, are covered with a pleasantly sweet pulp.

CULTIVARS *Trinitario* hybrid



CASHEW

Anacardium occidentale

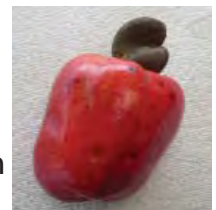
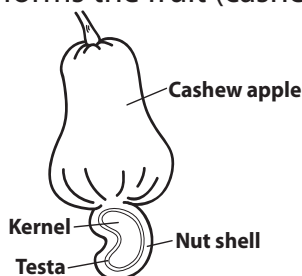
TREE SIZE Up to 25 feet in height and spread.

ECOLOGY Cashew is sensitive to excess humidity or moisture during flowering, which can cause loss or part or all of the crop. It does well in dry areas and is drought, wind, and salt tolerant.

PRODUCTION SEASON Seedling trees will begin to bear in 2-3 years. Cashew flowers in January thru February, and bears April through May.



DESCRIPTION Consists of the seed (cashew nut) and its swollen peduncle forms the fruit (cashew apple). The nuts hang below the waxy red or yellow skinned apples, whose flesh is spongy fibrous and very juicy. The nuts/apples fall when ripe. The apples are eaten fresh, stewed, or made into a refreshing juice or strong wine. The nuts must be roasted to remove the toxic outer shell.



VARIETIES *West African Beauty* - produces red or yellow apples of high quality.

CITRUS

TREE SIZE Depends on the type of citrus

- LARGE** Up to 40 feet high and wide
.....Pummelo, Grapefruit, Eureka Lemon, Tangelo, Tahitian Lime
- MEDIUM** Up to 20-30 feet high and wide
.....Oranges, Meyer Lemon, Mandarin, Calamondin, Kaffir Lime
- SMALL** Up to 10-15 feet high and wide.....Kumquat, Mexican(Key) Lime

The rootstock upon which the cultivar is grafted also determines the tree size.

STANDARD Full size of type

SEMI-DWARF Develops to 2/3 of standard

TRUE DWARF Develops to only 1/3 of standard. Tree grafted on this rootstock are ideal for small gardens and container growing.

ECOLOGY Kauai Nursery and Landscaping carries citrus varieties that are adapted to Hawaiian conditions. In general all our citrus will do well in any area.

Pummelo, Limes, and Grapefruit will do better in wetter areas, while Oranges and Mandarins will be of somewhat better color and taste in hotter, drier areas.

PRODUCTION SEASON Our grafted trees will bear in 2-3 years. winter to spring is the main season for citrus fruiting although, Limes and Lemons will bear year round with irrigation.

DESCRIPTION Citrus trees are valuable ornamentals in the garden as well as providing a wide range of delicious and nutritious fruit.

CULTIVARS *Cocktail Citrus* - Two or three types of citrus can be grafted together on a rootstock (ex. Orange/mandarine or lemon/grapefruit). It's important to match types of similar growth and vigor. It's also possible to "fine tune" by pruning.

Kauai Nursery and Landscaping offers a wide range of citrus types and varieties. All our trees are budded onto selected rootstocks, using virus-free propagation material.



1. 'Golden Bean' Kumquat 2. 'Sinton' citrangequat 3. 'eustis' limequat 4. 'Meiwa' kumquat 5. 'Nagami' kumquat 6. 'Calamondin' mandarin 7. 'Moro' blood orange 8. 'Tarocco' blood orange 9. 'Lisbon' lemon 10. 'Eureka' Lemon 11. 'Improved Meyer' lemon 12. 'Kusai' lime 13. 'rangpur' lime 14. 'Bearss' lime 15. 'Mexican' lime 16. 'Orlando' tangelo 17. 'Minneola' tangelo 18. 'Dancy' Mandarin 19. 'Clementine' mandarin 20. 'Satsuma' mandarin 21. 'Honey' mandarin 22. 'Nova' mandarin 23. 'Fairchild' mandarin 24. 'Kara' mandarin 25. 'Chinotto' orange 26. 'Bouquet de Fleurs' sour orange 27. 'Seville' sour orange 28. 'Shamouti' orange 29. 'Valencia' orange 30. 'Pineapple' orange 31. 'Marrs' orange 32. 'Temple' tangor 33. 'Washington' navel 34. 'Robertson' navel 35. 'Redblush' grapefruit 36. 'Star Ruby' grapefruit 37. 'Oroblanco' grapefruit 38. 'Marsh' grapefruit 39. 'Chandler' pummelo 40. 'etrog' citron 41. 'Buddha's Hand' citron



CALAMONDIN

Citrus madurensis

Calamondin is a Lime-like citrus that produces heavy crops of small, orange colored, seedy and acidic fruits year round. It is a very attractive small to medium sized tree which makes a beautiful accent or container plant. Calamondin does well in all areas.



GRAPEFRUIT

Citrus paradisi

Oroblanco - Large, seedless, white fleshed cultivar of excellent quality.

Flame - One of the best red fleshed cultivar for our climate. The large fruits are very sweet and seedless.

Star Ruby - Excellent quality with dark red flesh.



KUMQUAT

Fortunella spp.

Kumquats are small to medium sized citrus relatives. Their shiny, dark green foliage, fragrant white flowers, and bright orange fruits make them valuable ornamentals. Kumquats make excellent specimen trees, container plants, and beautiful hedges.

VARIETIES *Nagami* - Dense foliage with almost no thorns and small oval fruit that are tender and sweet.

Meiwa - Has rounder and sweeter fruit than Nagami



LEMON

Citrus limon

VARIETIES *Meyer* - Not a true Lemon, but much better adapted to our climate than true lemons are. It is a small, very attractive tree that produces large, bright yellow fruit year round. The Meyer Lemon does well in all areas and is an ideal container plant when grafted on dwarf rootstock.

Variegated Eureka - Attractive green and white foliage and fruit. The flesh is pink and contains few seeds. It has a highly acidic flavor. Produces year round.



LIMES

VARIETIES *Mexican or Key Lime* *Citrus aurantifolia* - A small, shrubby, thorny tree. Mexican lime produces small, very juicy, seedy and highly acidic fruit year round with irrigation. The new thornless cultivar is more upright in growth and has larger rounder leaves. The fruits are identical to the thorny type.



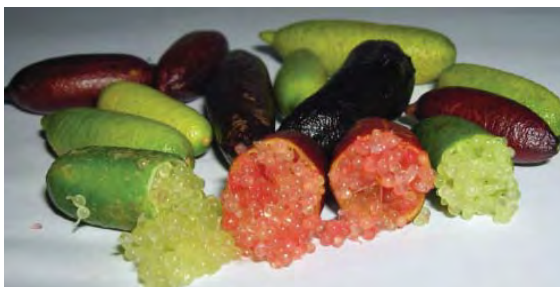
Tahitian or Bearss Lime *Citrus latifolia* - This lime has large, seedless fruits that are less acidic than the Mexican lime. This attractive tree will produce several heavy crops a year. It does well in all areas and makes an excellent container plant.



Australian Finger Limes

Citrus australasica

Is a thorny shrub or small tree from the dry tropical forests of northern Australia. The 3 inch long finger-shaped fruit contain numerous round juice vesicles known as "citrus caviar". Both the green and the red types are in stock.



Yuzu Lime *Citrus junos* - Yuzu lime is a small upright tree with many large thorns. The aromatic zest and acidic juice are widely used in japanise and korean cuisines.



MANDARIN

Citrus reticulata

VARIETIES *Clementine* - A small tree with small usually seedless, very sweet fruit. Early season. It produces higher quality fruit in dryer areas.

Dancy - Larger vigorous trees that produce heavy crops of medium sized well colored fruit in mid-season. Dancy is one of the best choices for wet areas.

Page - Is a medium sized thorn-less tree , producing early ripening fruit. This high quality mandarin are easily peeled, the flesh is dark orange, juicy and moderately seedy.



PUMMELO

Citrus grandis

VARIETIES *Chandler* - Large tree that produces medium sized pink fleshed fruit with small seeds.

Tahitian - Smaller tree with giant pear shaped fruit. The flesh is greenish/white with a tart lime-like flavor.



TANGELO

Mandarine x grapefruit hybrid

VARIETIES *Minneola* - Large very ornamental tree that produces heavy crops of large very juicy, brightly colored fruit. It has a delicious, distinctive taste and is usually seedless. Tangelos do well even in wetter areas.



© Ken Love



SWEET ORANGE

Citrus grandis

VARIETIES

NAVELS are the best eating oranges, bearing large, easy to peel, seedless fruits. There are varieties of the standard Washington navel which differ mainly in their time of maturity.

Cara Cara Navel - Slightly smaller and earlier than Washington navel. It is of excellent quality and has pinkish-orange flesh.

Washington Navel - The original navel orange, a medium sized tree with large fruit mid season.

COMMON ORANGES are more difficult to peel and generally smaller than navels. They are good to eat out of hand as well as great for juicing.

Olinda Valencia - Large round almost seedless fruit with high juice content.



© Forest & Kim Starr

COFFEE

Coffea arabica

TREE SIZE A small shrub reaching 10-15 feet in height and spread.

ECOLOGY Can be grown as a producing plant or as an ornamental in all areas with irrigation. Most varieties prefer light shade, but will tolerate full sun as an adult.

PRODUCTION SEASON Well maintained coffee trees will begin flowering and fruiting in the 2nd or 3rd year. Coffee beans ripen September through February.

DESCRIPTION Has shiny dark green foliage, fragrant white flowers, and bright clusters of red or yellow fruit, which gives it high value as an ornamental with the added benefit of its valuable coffee beans. Coffee is also well adapted to container growing and hedges.

VARIETIES *Kona Typica*- Adapted to low elevations and will grow well in full sun.



© Gardenology.org



DRAGON FRUIT, PITAHYA

Hylocereus undatus

GOLDEN DRAGON FRUIT

Selenicereus megalanthus

PLANT SIZE The Dragon fruit is a climbing cactus. The main stem should be trained up for 5-6 feet on a support. Then branching is allowed to encourage flowering and fruiting. Poles topped with frames, heavy wire, trellises, live trees or walls may be used to support the plant. Dragon fruit requires a well drained soil with high organic content. Plants may also be successfully grown in 15-25 gallon pots.

ECOLOGY Grows best in dry areas. Dragon fruit is drought tolerant but requires irrigation during summer months. Light shade and wind protection may be beneficial. It's beneficial to plant two or three different varieties together for cross pollination.



PRODUCTION SEASON

Cuttings should start to produce in 2-4 years. Flowering begins in June with fruit production in late summer to fall.

DESCRIPTION The crisp, sweet flesh is dotted with small black edible seeds. The brightly colored skin is adorned with "scales". This delicious and decorative fruit may be eaten fresh or made into juices and smoothies.

VARIETIES

Thai Dragon - Pink skin with green scales and white flesh.

Vietnam Dragon - Similar to Thai Dragon but with larger fruit.

Golden Dragon *Selenicereus* sp. - Bright yellow skin and white flesh. Sweetest and tastiest of the dragon fruit.

American Beauty- Has large red oval fruit with dark red flesh.

Edgar's Beauty- Has smaller, round very sweet red fleshed fruit.



EGG FRUIT, CANISTEL

Pouteria campechiana

TREE SIZE Height up to 20 feet, spread 10-15 feet.

ECOLOGY Grows well in all areas.

PRODUCTION SEASON Seedlings produce in 3-4 years. Trees bear September through November.

DESCRIPTION Egg fruit is an attractive small tree. The golden yellow fruits contain orange colored pulp similar to sweet potatoes. The Canistel is rich in nutrients and vitamins, and may be eaten raw or cooked.

VARIETIES *Bruce*



FIG

Ficus carica

TREE SIZE Height 10-30 feet tall, spread same.

ECOLOGY Figs grow best in hot, dry areas with good drainage, and are somewhat salt tolerant. Fruits are susceptible to fruit fly and bird damage.

PRODUCTION SEASON Produce in 2-3 years. Fruiting from July through February.

DESCRIPTION Figs are juicy and sweet with many small edible seeds.



CULTIVARS *White Kudota* - Medium sized yellowish green skin with white flesh

Brown Turkey - Medium to large fruit, coppery skin with pink flesh

Conadria - Medium greenish yellow fruit with pink flesh. Excellent flavor

Excell - Medium sized fruit with amber flesh, very sweet. Heavy bearer

LSU Gold - Large golden fruit, exceptionally sweet

LSU Purple - Dark red fruit with excellent flavor and sugar content

White Genoa - Medium fruit with greenish white skin and amber flesh

GUAVA, SWEET OR DESSERT

Psidium guajava

TREE SIZE Height up to 30 feet and as wide. Easily pruned to keep a manageable size.

ECOLOGY Very adaptable to a wide variety of soils and climates, doing well in all areas.

PRODUCTION SEASON Seedlings will produce in 3-4 years: air-layers in 1-2 years. Several crops a year may be produced with irrigation.

DESCRIPTION The fruits vary from grapefruit to golf ball size and are usually yellow when ripe. The flesh color varies from white to pink and may have seeds or be seedless depending on the variety.

VARIETIES

Hong Kong Pink - Medium to large dark pink fleshed fruit, sweet, tart, seedy.

Indonesian White - Large white fleshed, very sweet, some seeds.

Thai Varieties - Large, white fleshed, eaten green with salt and hot pepper.

Thai Seedless - Large, white fleshed.

Hawaiian sweet - yellow with very sweet pink flesh



GRUMICHAMA, BRAZILIAN CHERRY

Eugenia dombeyi

TREE SIZE A slow growing tree that can attain heights of 20- 30 feet. Spread 15-20 feet and may be contained with proper pruning practices.

ECOLOGY Grows well in all areas, requires irrigation in summer.

PRODUCTION SEASON Trees begin to produce in 4-5 years and bear fruit May thru July.

DESCRIPTION The Grumichama is a dense, shrubby tree with glossy, leathery leaves and makes an attractive landscape specimen. The fruits are purple when ripe and very juicy with a sweet cherry-like taste.



© Forest & Kim Starr

ICE-CREAM BEAN

Inga edulis

TREE SIZE Medium sized, wide spreading tree with a flat crown.

ECOLOGY Prefers wetter climate or irrigation and warm temperatures.

PRODUCTION SEASON Fruits (beans) are produced irregularly during the year.



DESCRIPTION The several foot long 'beans' contain a white pulp covering the seeds which has a flavor similar to vanilla ice-cream. The tree is a nitrogen fixing and used to shade coffee and cacao plantations. It's also a very attractive white flowering ornamental.



JABOTICABA

Myrciaria cauliflora

TREE SIZE A slow growing tree, that will reach a height of 20-25 feet with a spread of 15-20 feet after many years.

ECOLOGY Adapted to all areas with irrigation, the Jaboticaba will develop best on deep loamy soils.

PRODUCTION SEASON Trees take 6-8 years to produce and will bear several crops a year if irrigated.



DESCRIPTION Jaboticaba is a branched, shrubby tree with attractive foliage and dark purple fruits that develop directly on the trunk and branches. The fruits look and taste similar to Concord grapes. They are eaten fresh or made into jam or wine.

CULTIVARS *Paulista aka Giant* - A larger fruited cultivar.
Murta - It has smaller fruit and leaves, but is very productive.

JACK FRUIT

Artocarpus heterophyllus

TREE SIZE This fast growing tree can reach 60 feet in height with a 30 foot spread. However with proper pruning the tree may be kept in 10-20 foot range. Smaller cultivars are also available.

ECOLOGY Does best in hot, wet areas, but will thrive in dry areas if irrigated. Not salt tolerant.

PRODUCTION SEASON Grafted trees will produce in 2-3 years. In Hawaii main bearing season is August through December.

DESCRIPTION Beautiful specimen tree, and also makes an attractive and effective windbreak. The size of the fruit varies between 4 and 80 pounds depending on the variety. The soft or crunchy flesh around the seed is eaten fresh. The young fruits are used as vegetables in Asia, and the seeds are boiled or roasted.



CULTIVARS *Black Gold* - This cultivar produces 20 lb. fruit with soft, orange flesh, and sweet flavor. The tree can be maintained at a modest size.

Ziman Pink - A dwarf cultivar with small roundish fruits, crunchy flesh and a delicious flavor.

NSI - Medium size upright tree with very large fruit. The flesh is soft and yellow.

LONGAN

Dimocarpus longan

TREE SIZE Height 30-40 feet and spread about the same.

ECOLOGY The Longan prefers wet areas and requires irrigation during dry spells.

PRODUCTION SEASON Air-layered trees produce in 3-4 years. The fruits are harvested in late summer and fall.



DESCRIPTION A large spreading tree which bears clusters of sweet, juicy, golden fruit. The fruit may be eaten fresh, canned, or dried.



VARIETIES *Ewai* - Smaller, very sweet fruit, very productive
Biew Kiew - A consistent bearer with high quality fruit
Si Chomphu - Excellent Thai variety

LYCHEE

Litchi chinensis

TREE SIZE Height 15-60 feet with a 15-60 foot spread, depending on the variety.

ECOLOGY Prefers medium wet areas. Trees grow best with good drainage and acidic soils.

PRODUCTION SEASON Air-layered trees will produce in 3-5 years. Fruits may be harvested May-July depending on the variety.

DESCRIPTION The Lychee is a handsome specimen tree. The clusters of pink to red fruits are juicy and sweet.

CULTIVARS *Kaimana* - The most popular in Hawaii. The smaller size tree is a consistent bearer of high quality fruit in May.

Groff - Bears larger fruit in June-July.

Emperor - A medium size tree with an attractive red flushed new leaves and excellent fruit in June-July.

Bosworth-3 - A late variety from Australia has yellowish pink fruit with small seeds.



LOQUAT

Eriobotrya japonica

TREE SIZE Height 20-30 feet, spread 15-25 feet.

ECOLOGY Does well in all but the wettest areas.

PRODUCTION SEASON Grafted trees begin to bear in 3-4 years. Two to three crops a year are produced.

DESCRIPTION The Loquat is a medium size tree with attractive grey-green foliage. The oval, 1-2 inch dark yellow fruits are juicy and sub-acidic.

CULTIVARS *Mammoth and Golden Nugget* - Improved varieties that produce well in Hawaii.

Obusa - A Japanese cultivar with very large fruit if thinned.



MACADAMIA NUT

Macadamia integrifolia

TREE SIZE Generally medium sized trees that range from 30-40 feet in height.

ECOLOGY Needs sufficient rainfall or irrigation. Wind protection is essential as the trees are shallow rooted and rather easily blown over. Soil should be well-drained and rich in organic matter.

PRODUCTION SEASON Grafted trees will bear in 3-4 years. The nuts are harvested in the Fall to early spring.



© Forest & Kim Starr

© Forest & Kim Starr



DESCRIPTION An attractive tree with semi-glossy holly- like leaves that produces a delicious nut with a very hard shell.

CULTIVARS *#344 Kau* - Is the most popular cultivar in Hawaii. It's very productive with large, high quality nuts.

MALABAR CHESTNUT

Pachira aquatica

TREE SIZE This handsome, green barked landscape specimen, can reach 60 feet in height.

ECOLOGY Does well in full sun to part shade on all well drained soils. Needs regular rain fall/irrigation.



DESCRIPTION In November through February, the nuts are harvested when the pods open. They may be eaten raw or roasted.

MAMMEY APPLE

Mammea americana

TREE SIZE This very attractive tree can grow to 60 feet in height.

ECOLOGY It's very adaptable to various soils and conditions, as well as being very resistant to pests and diseases.

PRODUCTION SEASON Seedlings will bear in 6-8 years. Harvest is in September/ October.

DESCRIPTION The round, softball-sized fruit are ready to harvest when the flesh under the scratched skin is yellow. When slightly soft the Mamey is ready to eat. After peeling the bitter membrane or "rag" located under the skin should be scraped off. The firm orange, fragrant flesh is pleasantly sub-acid resembling mango/ apricot...



MAMMEY SAPOTE

Pouteria mammosa

TREE SIZE A large tree growing to over 60 feet in height with a narrow or spreading crown.

ECOLOGY The Mammey Sapote prefers medium wet to wet areas with deep soil and good drainage. Stress from drought will cause defoliation.

PRODUCTION SEASON Seedlings will begin bearing in 8-10 years. Harvest is from June to October.

DESCRIPTION The brown skinned fruits are orange to red fleshed. The rich nutritious pulp is soft and pumpkin-like when ripe. Fruits may be eaten fresh or made into smoothies.



MANGO

TREE SIZE Grows 12-60 feet in height and spread, depending on the variety.

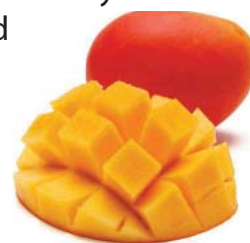
ECOLOGY Mangos will grow well in most areas but only a few varieties will bear well in wetter areas due to anthracnose. Anthracnose is a fungal disease that attacks the flowers and fruits of non-resistant varieties.

PRODUCTION SEASON Grafted trees will begin to bear in 3-4 years. The main season extends from May through August although some late varieties hold their fruits until winter.



DESCRIPTION

The mango is one of the world's most popular fruits, coming in a wide range of sizes, flavors, and colors. Mangos are eaten fresh or made into a variety of culinary treats, such as chutney, fruit salad and mango salsa.



CULTIVARS

ANTHRACNOSE RESISTANT: SUITABLE FOR ALL AREAS

Brook's Late

FRUIT: Medium

PRODUCTION SEASON: Oct - Dec

TREE SIZE: Large

It produces medium-sized fruit of high quality. The latest cultivar to ripen.



Carabao

FRUIT: Small

PRODUCTION SEASON: June/July

TREE SIZE: Large

It's from the Philippines and regularly bears excellent quality fruits. It's a very disease resistant early season cultivar.



Cogshall

FRUIT: Medium

PRODUCTION SEASON: June/July

TREE SIZE: Large

Excellent choice for small areas or containers. This cultivar from Florida can be kept to 8 feet and produces very sweet, fiber-less fruit.



Edward

FRUIT: Large

PRODUCTION SEASON: June/July

TREE SIZE: Large

It has beautifully colored fruit of exceptional quality.



Fairchild

FRUIT: Small

PRODUCTION SEASON: Jun - Aug

TREE SIZE: Small

A dwarf tree that bears small, very sweet, green/yellow fruit.



Florigon

FRUIT: Medium

PRODUCTION SEASON: May/Jun

TREE SIZE: Large

It produces bright yellow fruit of excellent quality.



Keitt

FRUIT: Large

PRODUCTION SEASON: Aug - Oct

TREE SIZE: Medium

It bears large, nicely colored fruit.



Mallika

FRUIT: Medium

PRODUCTION SEASON: June/July

TREE SIZE: Small

Very anthracnose resistant. The deep orange flesh is very sweet with a honey flavor.



Manzanillo

FRUIT: Medium

PRODUCTION SEASON: June/July

TREE SIZE: Large

It bears very colorful fruit of excellent quality.



Nam Doc Mai

FRUIT: Medium

PRODUCTION SEASON: June/July

TREE SIZE: Medium

It's a favorite Thai dessert mango. It produces very sweet fruit.



Rapoza

FRUIT: Large

PRODUCTION SEASON: Jun - Aug

TREE SIZE: Medium

Is one of the most sought after cultivars in the islands. It has well-colored fruits and bears heavily.



Vallenato

FRUIT: Small

PRODUCTION SEASON: June/July

TREE SIZE: Large

The bright red fruit are of excellent quality. It's a disease resistant cultivar and reliable producer originating in Columbia.



MODERATLY ANTHRACNOSE RESISTANT: SUITABLE FOR MEDIUM WET TO DRY AREAS

Equiva

FRUIT: Small

PRODUCTION SEASON: June/July

TREE SIZE: Medium

A cultivar of unknown origin that is a heavy producer of bright red fruit.



Glenn

FRUIT: Large

PRODUCTION SEASON: May/June

TREE SIZE: Small

A semi-dwarf tree that produces large, top quality fruit.



Maha Janok

FRUIT: Medium

PRODUCTION SEASON: Jun - Sep

TREE SIZE: Large

A new cultivar from Thailand, bears clusters of beautiful fruit of excellent quality.



Mapulehu

FRUIT: Medium

PRODUCTION SEASON: Summer

TREE SIZE: Large

A large tree with delicious yellowish green/pink fruit from June through August.



Parvin

FRUIT: Medium

PRODUCTION SEASON: Summer

TREE SIZE: Large

Is a selection of the cultivar Haden. It's a large tree that produces medium sized yellow fruit with a red blush in July/August.



R2E2

FRUIT: Large

PRODUCTION SEASON: Summer

TREE SIZE: Large

This selection of the excellent Floridian cultivar Kent bears large colorful fruit of exceptional quality from June through August.



Shin

FRUIT: Large

PRODUCTION SEASON: Spring

TREE SIZE: Large

This large local cultivar produces large very early fruit.



CULTIVARS THAT ARE SUITABLE FOR DRY AREAS ONLY

Excel

FRUIT: Medium

PRODUCTION SEASON: Jul - Aug

TREE SIZE: Medium

A Hawaiian selection. It normally produces high quality, bright red fruit. It will also often bear multiple times off season as well.



Golden Glow

FRUIT: Large

PRODUCTION SEASON: May/June-

TREE SIZE: Medium

A favorite in Kona and Maui. It produces very large delicious and well colored fruit.



Gouveia

FRUIT: Large

PRODUCTION SEASON: Jul - Aug

TREE SIZE: Medium

This tree will produce excellent quality green/red fruit.



© Ken Love

Haden

FRUIT: Medium

PRODUCTION SEASON: May - Jul

TREE SIZE: Large

The most popular "Supermarket Mango". It is of excellent quality and color when tree ripened.



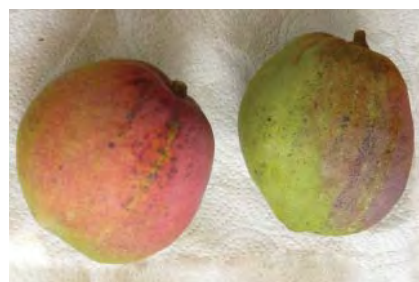
Julie

FRUIT: Small

PRODUCTION SEASON: May/June-

TREE SIZE: Dwarf

A true dwarf cultivar that is a heavy and regular bearer of small high quality fruit.



Pirie

FRUIT: Small

PRODUCTION SEASON: July

TREE SIZE: Large

Produces very sweet, small yellow/red fruit.



Zillate

FRUIT: Large

PRODUCTION SEASON: Aug - Oct

TREE SIZE: Medium

It produces large, purple-tinged fruit.



We are now offering "3 Season" mango trees that are grafted with 3 different cultivars. They will bear fruit from May/June through October/November. An ideal solution for those mango lovers with limited space!



MANGOSTEEN

Garcinia mangostana

TREE SIZE A very slow growing tree that can reach 20-30 feet in height and 12-15 feet wide.

ECOLOGY The Purple Mangosteen is difficult to grow in all but the most favorable microclimates. It demands year-round high humidity and wind protection. Light shade is beneficial until the tree reaches 6 feet in height. Plenty of organic material and micro-nutrients are recommended.



PRODUCTION SEASON Purple Mangosteen seedlings (trees are not grafted or air-layered) will take from 8-15 years to bear, depending on location and care. Fruits ripen in the summer/fall.

DESCRIPTION Purple Mangosteen bears tennis ball sized, purple brown, thick-skinned fruits in the Summer. It is widely considered to be one of the world's most delicious fruits.

VARIETIES There are no varieties of Purple Mangosteen. The *Yellow* or *Gamboga* Mangosteen is a larger faster growing and less demanding plant compared to the Purple Mangosteen. The fruit of *Yellow* Mangosteen is smaller and more acidic, and may bear within 4-5 years.

MIRACLE BERRY, MIRACLE FRUIT

Synsepalum dulcificum

TREE SIZE Grows slowly to 6-10 feet in height. A dwarf variety is about half this size.

ECOLOGY Miracle fruit will do well in all areas in full sun if watered regularly. It prefers acidic, well drained organic soils. Peat moss may be added to achieve desired acidity. Miracle Berry makes an excellent container plant.

PRODUCTION SEASON Plants produce year around in 2-3 years.



DESCRIPTION The Miracle Berry is attractive with glossy leaves, white flowers, and bright red fruits. The amazing thing about the Miracle Berry is, after ingestion, it has the ability to make sour, acidic things such as a lemon appear to taste sweet. The effect lasts for hours.

MOUNTAIN APPLE, MALAY APPLE

Syzygium malaccense

TREE SIZE The Mountain Apple is a fast growing tree 40 to 60 feet tall with a spread of 15 to 20 feet.

ECOLOGY Mountain Apple prefers wetter areas with high humidity, and good wind protection.

PRODUCTION SEASON Grafted or air-layered trees will bear in 3-4 years. Fruits are produced June through August.

DESCRIPTION Mountain Apple is one of the most beautiful fruit trees. The large glossy leaves, red/pink new foliage, and the showy flowers and fruits make it an outstanding landscape tree. The fruit are 2-4 inches long and vary in color red to pink, green to white. The skin is waxy and the flesh white, juicy with a mild sweet rose-like taste.



CULTIVARS *Kingston* - A very productive with large red fruits of excellent quality

Top Tin Jan - From Thailand has medium sized crispy white fruit with a delicate flavor. Very productive with several harvests a year.



PAPAYA

Carica papaya

PLANT SIZE Fast growing, soft wood-
ed plant that can grow to 30 feet. Small-
er cultivars are available.

ECOLOGY Papayas may be easily grown
in all areas. They demand good drainage
and protection from wind. Soils with
high organic matter are preferred,
although Papayas are known to do well
even in sandy soils.

PRODUCTION SEASON Plants will
begin production in 6 months to 1 year
depending on the cultivar and the cultural conditions. Papayas will produce for 2-3 years
at which point they become too tall to harvest practically, or begin to decline. Fruiting takes
place almost year round.

DESCRIPTION The single trunk, large leafed plant flowers and fruits at each leaf axis. The
fruits may vary from round to oblong and from less than 1 pound to 10 pounds or more. The
sweet flavored fruit is rich in vitamins and excellent for digestion (papain). Fruits should be
picked 1/3 to 1/2 yellow and then kept until fully ripe.

CULTIVARS *Solo Sunrise* and *Solo Sunset* - The most popular Hawaiian cultivars. They produce
small reddish /pink fleshed fruit of excellent quality. These cultivars are relatively delicate.

Solo Waimanalo - Bears somewhat larger fruit that are yellow/orange fleshed.

This cultivar tends to bear fruit lower on the trunk and was bred for disease resistance and
high productivity.

Watermelon - Another local cultivar similar to Yokozuna but bears very large fruit that can
weigh up to 10 pounds.

Yokozuna - A Kauai cultivar which is very robust and disease resistant. It bears medium sized
fruit of 2-3 pounds. The flesh is reddish and very sweet.



Solo Sunrise



Waimanalo



Watermelon



Yokozuna

PASSION FRUIT(YELLOW), LILIKOI

Pasiflora edulis var. flavicarpa

PLANT SIZE A vigorous vine that can cover large areas quickly.

ECOLOGY The Yellow Passion fruit grows well in all areas at lower elevations.

PRODUCTION SEASON Will flower and fruit the first year and bear continuously during the Summer and Fall.



DESCRIPTION The Yellow Passion fruit can be trained up a tree, trellis, or to cover a lanai. The distinct flowers are purple/white. The bright yellow tennis ball sized fruits contain a sour, aromatic orange colored pulp. The juice is used for drinks, ice cream, preserves, and baked goods.



VARIETIES The closely related Purple Passion- fruit is sweeter but only thrives at higher elevations in Hawaii.

PEANUT BUTTER FRUIT

Bunchosia argentea

TREE SIZE A large shrub or small tree

ECOLOGY All areas

PRODUCTION SEASON Will produce in 2-3 years, fruiting in August to October.

DESCRIPTION This very ornamental shrub has attractive bright yellow flowers followed by orange-red fruits that taste like peanut butter. The fruits ripen from August to October.



POMEGRANATE

Punica granatum

TREE SIZE A large shrub or small tree which grows up to 20 feet high and wide.

ECOLOGY Does best in warm, dry areas and is salt and drought tolerant.

PRODUCTION SEASON Will begin to produce in 2-3 years. It bears continuously from May to December with irrigation.

DESCRIPTION The pomegranate is valued for its refreshing, healthy fruit as well as its ornamental foliage, flowers and fruits. The shiny green leaves flush red to pink and the showy orange-red flowers develop into large leathery yellow fruits overlaid with pink or red. As a 4 foot plus hedge its dense spiny branches make it an effective barrier.



RAMBUTAN

Nephelium lappaceum

TREE SIZE Reaches 25-35 feet in height and spread.

ECOLOGY Does well in wetter areas. Wind protection is necessary. Deep loamy soil with high organic matter content and good drainage is preferred.

PRODUCTION SEASON Grafted trees will bear in 3-4 years. Fruits are harvested from Fall to Spring depending on the variety.

DESCRIPTION The fruit is distinctive and very attractive with soft red, yellow, or green spines covering the red skin. The flesh of the fruit is similar to that of Lychee, but 2-3 times larger with a delicious, sweet, sub-acid flavor.



CULTIVARS *Rong Rian* - The best Thai cultivar

ROLLINIA, BIRIBA

Rollinia deliciosa

TREE SIZE Rollinia are fast growing and can reach 10-30 feet in height and width.

ECOLOGY The Rollinia prefers warm, humid locations in full sun and will tolerate wet soils.

PRODUCTION SEASON Seedlings enter into production in 4-5 years and fruit irregularly year around.



DESCRIPTION The fruit is yellowish-brown when ripe with juicy flesh. The taste is sub-acidic to sweet. Superior in quality and production to Atemoya.

SAPODILLA, CHICO

Manilkara zapata

TREE SIZE Grows up to 60 feet high and 30 feet wide, although some cultivars remain smaller.

ECOLOGY Will do well in all areas. It is drought, wind, and salt tolerant, but requires good drainage.

PRODUCTION SEASON Seedlings bear in 5-8 years, air-layered trees in half that time.

DESCRIPTION The Sapodilla is one of the most beautiful fruit trees. It is fairly slow growing with spirally clustered glossy leaves. The brownish fruits vary in size and shape depending on the cultivar. The flesh is soft, very sweet and aromatic.



VARIETIES *Prolific, Alano, Krasuai*

SANTOL

Sandoricum koetjape

TREE SIZE Seedlings can grow to 100 feet high and 50 feet wide, grafted trees are much smaller.

ECOLOGY Does well in all areas, and is drought and wind resistant.

PRODUCTION SEASON Vegetatively propagated trees should produce in 4-5 years. Fruits ripen in the Fall.

DESCRIPTION Fast growing tree with attractive foliage that turns red in the cooler season. The yellowish-brown fruits fall when ripe. Fruits are grapefruit sized and contain 3-5 seeds surrounded by a fluffy, white, sweet and sour pulp.

CULTIVARS *Pui Fai* - An excellent Thai cultivar



STAR APPLE, CAINITO

Chrysophyllum

TREE SIZE Height up to 50 feet with a 30 foot spread.

ECOLOGY Trees will do well in all but the driest areas. Star Apples like warm temperatures, high humidity, and plenty of water. Good drainage is essential.

PRODUCTION SEASON Seedlings take 7-10 years to produce fruit. Air layers will bear in 3-4 years.



DESCRIPTION The Star Apple is a beautiful specimen tree with shiny dark green leaves that have coppery undersides. The green or purple fruits are 2-4 inches in diameter and contain a white, milky, sweet pulp.

VARIETIES *Haitian* - a superior purple skinned cultivar.

STARFRUIT, CARAMBOLA

Averrhoa carambola

TREE SIZE Height up to 25 feet, spread 12 feet.

ECOLOGY All areas with irrigation and good drainage.

PRODUCTION SEASON Grafted trees produce in 1-2 years. Trees then bear several times a year with heaviest production in the Fall.



DESCRIPTION The Starfruit, with its graceful branches, fine foliage, abundant pink flowers and translucent yellow fruits is one of the most beautiful tropical fruit trees.

VARIETIES *Kajang* - Heavy producers of good quality large sized fruit.

Malaysian Sweet - Medium fruit of excellent quality.

Thai Dwarf - Small tree (7-10 feet) bears medium sized fruit from 1st year

SOURSOP, MOYA

Annona muricata

TREE SIZE A fast growing tree that reaches 10 to 20 feet high and half as wide.

ECOLOGY Will do well in all areas but needs well drained soil and irrigation.

PRODUCTION SEASON Seedlings will produce in 3-4 years. Moya bears fruit between June and October.

DESCRIPTION Attractive small tree with shiny green leaves. The large spiny green fruits are borne directly on the main branches. The delicious fruits are eaten fresh or made into tasty ice cream or smoothies. As is the case with the other Annonas, the seeds are toxic.

VARIETIES *Cuban Fiberless* - Improved selection with creamy flesh and superior taste.



SUGAR APPLE, SWEET SOP

Annona squamosa

TREE SIZE A small bushy tree from 15-20 feet high and as wide.

ECOLOGY Will grow better in dry areas and any soil provided it has good drainage.

PRODUCTION SEASON Seedlings produce fruit in 2-4 years. Fruits ripen in the late Summer to Fall.

DESCRIPTION The Sugar Apple is deciduous, losing its leaves during drought periods and the winter months. The round fruits are composed of knobby segments greenish-grey in color that separate when ripe. The flesh is white, creamy, fragrant and very sweet.

CULTIVARS KNL also has a purple fruited cultivar from Thailand.



SURINAM CHERRY

Eugenia uniflora

TREE SIZE A shrubby tree that can obtain 25 feet high with a 15 foot spread.

ECOLOGY Will do well in all areas, and in most soil types. Though it is drought tolerant, watering will increase fruit size and quality. Plants can withstand some water logging but are not salt tolerant.

PRODUCTION SEASON Will produce several crops of fruit a year from the age of 3-4 years on.

DESCRIPTION Makes an excellent specimen plant or hedge in the garden. The leaves flush out red, then pink, and finally dark green. The small pumpkin shaped cherries are red, orange, or black. The black types have larger, sweeter fruits.



SWEET TAMARIND

Tamarindus indica

TREE SIZE This slow growing long lived tree can reach 100 feet in height with a 60-80 foot spread.

ECOLOGY Very adaptable and will do well in all areas and soils if drainage is adequate. Tamarind is very wind, salt and drought tolerant.

PRODUCTION SEASON Seedlings begin producing in about 6-8 years air-layered or grafted cultivars in half that time. Fruit ripen in the fall to winter.

DESCRIPTION Fine feathery foliage and gracefully drooping branches make it an excellent specimen tree for the large garden. The brown fruit pods contain a sticky sour-sweet paste surrounding the seeds. Sweet varieties are eaten out of hand.



WAMPI

Clausena lansium

TREE SIZE A small tree reaching 20 feet high with a 15 foot spread.

ECOLOGY Will do well in all areas if irrigated during dry periods, requires good drainage.

PRODUCTION SEASON Seedlings begin to produce in 3-5 years and bear one or more crops a year, June through September.

DESCRIPTION An attractive small tree that produces clusters of golden brown berries. The fruits taste like tart gooseberries. Generally eaten fresh or made into jams or a refreshing drink.



WHITE SAPOTE

Casimiroa edulis

TREE SIZE White Sapote attains 20-40 feet in height, with some seedlings growing to 60 feet in height.

ECOLOGY Will do well in all areas and soils with sufficient drainage.

PRODUCTION SEASON White Sapote seedlings will take 7-8 years to produce. Grafted or air layer trees will take 3-4 years. Fruits ripen September through November.

DESCRIPTION The round fruits are green to yellow skinned, with creamy white flesh.

VARIETIES *Suebelle* - Small to medium sized fruit of excellent flavor. It is early bearing and produces several crops a year.

